



Dutch LightingTM
Innovations



DLI LED NOVA

Redefine
Grow Light

Designed and made in The Netherlands

DLI NOVA Serie – Modular design for maximum flexibility

The DLI NOVA Series is a powerful, full-spectrum light that supports every stage of plant growth. Built-in The Netherlands with top-tier Osram diodes and Signify LED boards, it delivers an exceptional efficacy of up to 2.9 $\mu\text{mol/J}$, ensuring vigorous plant development from veg to flower. Its full white spectra maximize plant health and yield, while low light degradation guarantees long-term consistency. The modular design adapts seamlessly to any rack setup, with daisy-chainable power cords cutting installation costs dramatically—clean and easy installation with wire harnesses and cable management. Ensuring bars are mounted straight and level easily for maximum uniformity, allowing growers to get closer to the lights.

Built To Last – Low Degradation

Manufactured in The Netherlands to the highest DLI standards, the NOVA Series is the first low-degradation fixture for use in multilayer cultivation. The use of high-quality components, a unique LED board design and industry-leading cooling capacity through careful use of the venturi effect result in minimal light degradation. Providing you optimal return on your investment and consistent results over years to come.

Optimal Plant Performance

Our full white spectra are developed for cannabis in the vegetative and flowering growth stages. Made with German Osram diodes and Signify LED boards, it produces an impressive efficacy of 2.9 $\mu\text{mol/J}$ whilst using a protective wide lens that ensures optimal light spread, promoting healthier and more productive plant growth.

Reduced Installation Cost

The prefabricated and daisy-chainable power cords allow up to 40 bars to be connected to one power outlet, reducing the installation cost. In addition, the innovative design ensures quick, easy, and clean installation of the entire system.

Modular & Flexible Design

With a driver in each bar, the bars are modular and ideal for use in racks of every size. The innovative design allows adjusting the distance between bars to customize the light intensity from 400 to 1600 $\mu\text{mol/m}^2\text{s}$ (at 100% output). The flexible distance between bars will enable growers to customize the system to the required light output. It allows for increased light levels later without purchasing all new fixtures. Standard and custom cabling and bracket options are available to ensure the best solution for your grow.

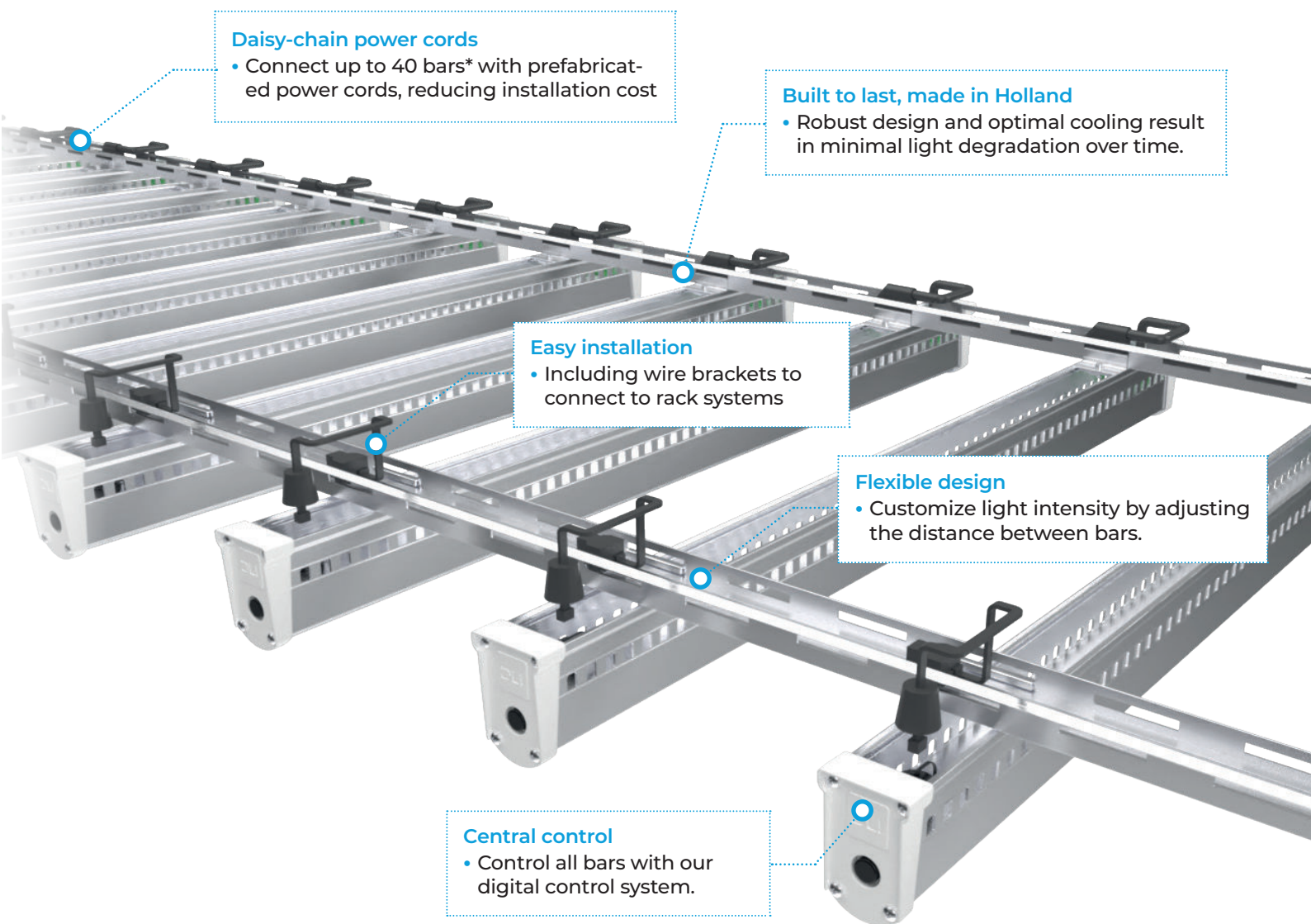
Ip 65 Waterproof Rating

Your rack design may include irrigation strategies that interact with your lighting, and the DLI NOVA Series is available with a protective lens to ensure LED protection without compromising light output. Its high IP rating ensures durability in humid environments such as multitier grows.

Controllable With DLM-4 Controller

Control your lighting bars with the DLI DLM-4 controller or use the DLI converter to connect with other control systems. Four zones can be programmed independently, up to 200 lights, and a sensor can be connected to each zone.

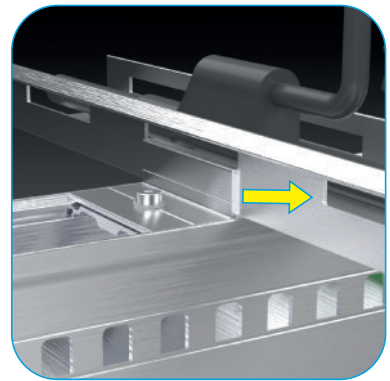
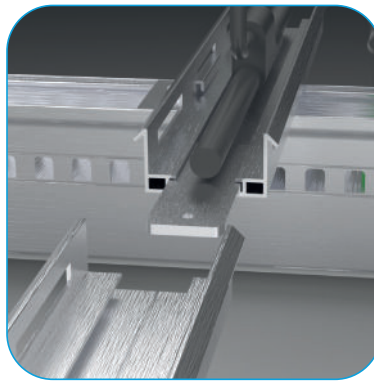
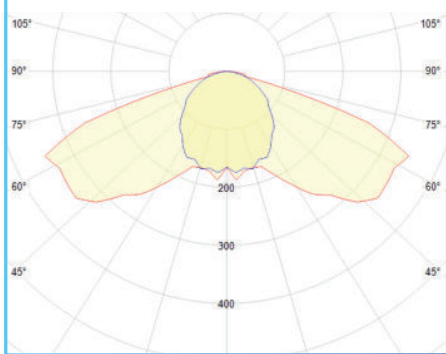




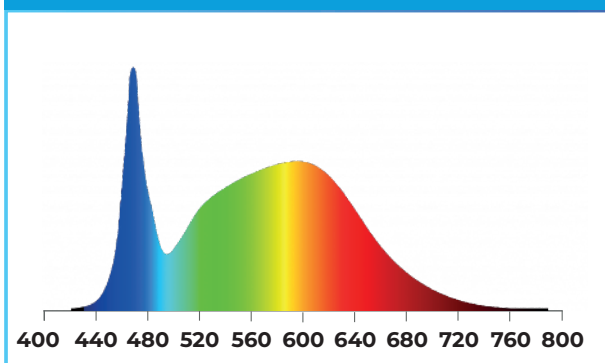
DLI NOVA			
Input voltage	208-400V	LED brand	Osram
Power inlet	Wieland RST20 connector	Dimming	Yes, 30% - 100%
Frequency	50-60 Hz	Output Vegetative Output Flower	600 $\mu\text{mol/s}$ 630 $\mu\text{mol/s}$
Power factor	>0.98	Efficiency Vegetative Efficiency Flower	2,7 $\mu\text{mol/J}$ 2,9 $\mu\text{mol/J}$
IP rating	IP65	Dimensions	113 X 10,2 X 6,6 cm
Country of production	The Netherlands	Weight	2.9 kg
Ambient temperature	25 °C	Power consumption	220W
Driver manufacturer	Signify		

DLI LED NOVA

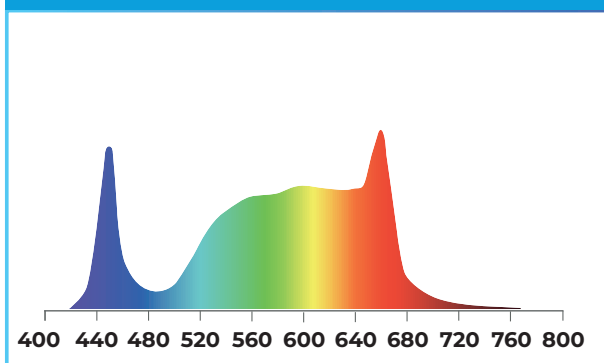
Wide Light Distribution



Vegetative Spectrum



Flower Spectrum



Redefine
Grow Light

Designed and made in The Netherlands