

A walkthrough on how to setup the DLI ZENITH, HPS JOULE and DLI CRI UV fixtures on a DLM-4 zone controller

ATTENTION Please ensure:

Do not mix different types of fixtures in the same zone.

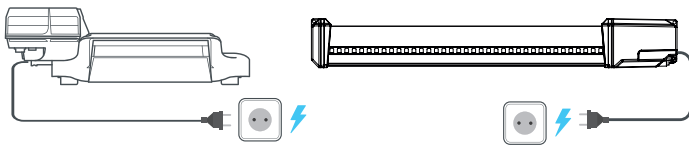
Your fixture:

You bought a DLI ZENITH, HPS JOULE or DLI CRI UV fixture. Please realize this fixture has NO manual override for the controller. Meaning the fixture will be in the ON position (lights on) if main voltage is applied and NO controller is connected.

Please follow the following steps to setup your installation correctly.

1. Connect your fixture(s) to the mains.

They will light on, when mains power switched on.

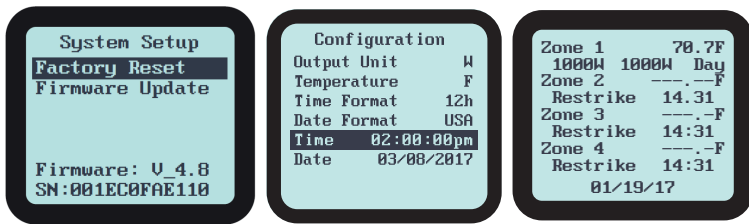


Note: the fixture will stay on till it receives the correct command from a DLM-4 controller (default setting for the fixture is to be on).

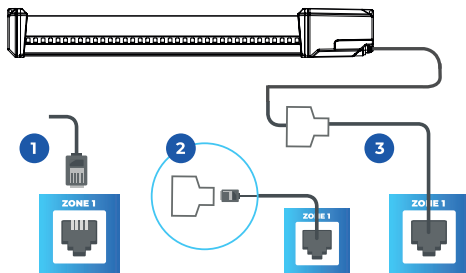
2. Setup the Zone 1 on the DLM-4 controller.

In order to test whether the fixture listens to the controller, the controller has to send an "OFF" signal to the fixture.

2^a. Ensure you have the correct software / latest software installed on the controller. Select 'LED' for ZENITH fixture, select 1000W or 750W for HPS JOULE or select UV. If not, please ask for an update from your dealer before moving on.



3. Connect the first fixture to the controller



3.1 Plug one end of the controller cable into "zone 1"

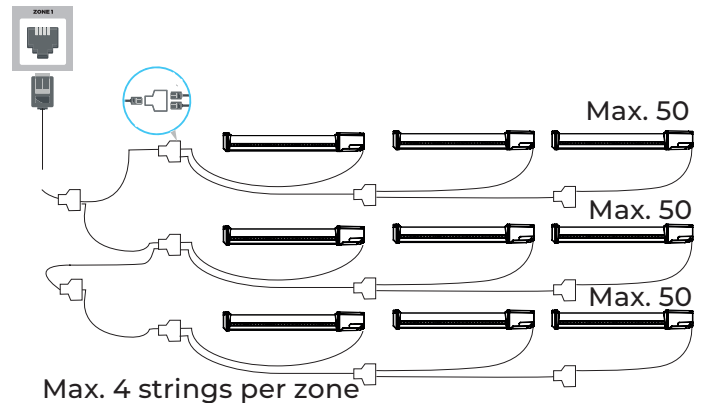
3.2 Plug the other end of the controller cable into the input side of the t-splitter

3.3 Connect a cable from one of the two output port of the T-splitter to the fixture.

When connecting the power cable to the fixture, the fixture should switch ON.

4. Connecting more fixtures

If the first fixture turns on, start adding fixtures ONE by ONE to the controller grid. Every fixture that gets connected should switch ON. Please follow this sequence.



Attention: ONLY use cables supplied by Dutch Lighting Innovations. Each zone must have a single wattage/type of fixture connected to it.

- First install all the fixtures and ensure proper operation. Install the temp probe last.
- Do not mix fixtures with different wattages on the same zone.
- Follow all local and national electrical codes for installation requirements.
- Don't use damaged communication cables.

Please ensure the correct use of the splitters, and use the correct sequence.

The maximum amount of fixtures connected to the system is 800 pieces* depending on the cable length and possible interference due to external influence.

*Divided over 4 zones and 4 strings of 50 pieces per zone.

5. Use temperature sensor

Use the separate temperature sensor in the network only after you installed all of the fixtures and everything works properly.

ATTENTION Please ensure:

Do not mix different types of fixtures in the same zone.

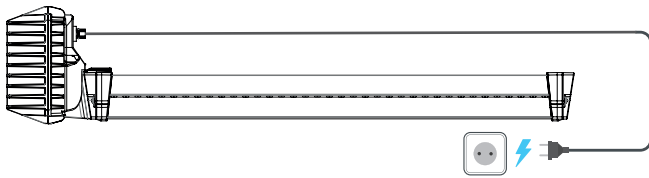
Your fixture:

You bought a DLI APEX-Series LED TopLight 800 FS-DC fixture . Please realize this fixture has NO manual override for the controller. Meaning the fixture will be in the OFF position (NO light) if main voltage is applied and NO controller is connected

Please follow the following steps to setup your installation correctly.

1. Connect your fixture(s) to the mains.

They will NOT light on, when mains power switched on.

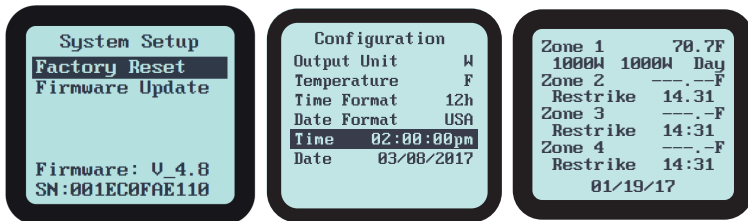


Note: the fixture will stay off till it receives the correct command from a DLM-4 controller (default setting for the fixture is to be off to protect your crop if the communication fails with the controller.)

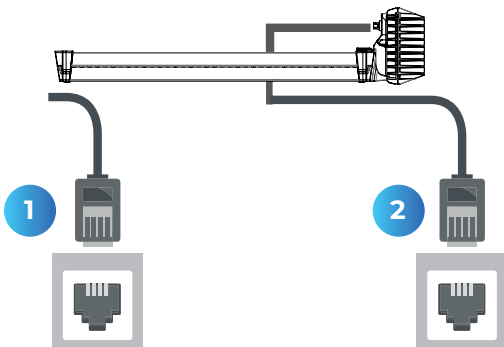
2. Setup the Zone 1 on the DLM-4 controller.

In order to test whether the fixture listens to the controller, the controller has to send an “On” signal to the fixture.

2^a. Ensure you have the correct software / latest software installed on the controller. Select ‘LED’ for APEX fixture. If not, please ask for an update from your dealer before moving on.



3. Connect the first fixture to the controller



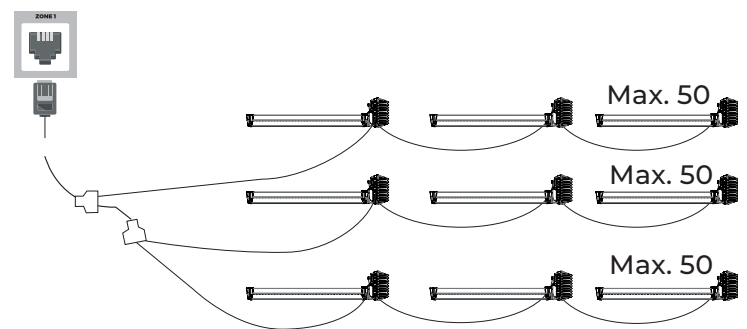
3.1 Plug one end of the controller cable into “zone 1”

3.2 Connect the controller to the ‘IN’ port of the APEX fixture.

When connecting the power cable to the fixture, the fixture should switch ON.

4. Connecting more fixtures

If the first fixture turns on, start adding fixtures ONE by ONE to the controller grid. Every fixture that gets connected should switch ON. Please follow this sequence.



Max. 4 strings per zone

Attention: ONLY use cables supplied by Dutch Lighting Innovations. Each zone must have a single wattage/type of fixture connected to it.

- First install all the fixtures and ensure proper operation. Install the temp probe last.
- Do not mix fixtures with different wattages on the same zone.
- Follow all local and national electrical codes for installation requirements.
- Don't use damaged communication cables.

Please ensure the correct use of the splitters, and use the correct sequence.

The maximum amount of fixtures connected to the system is 600 pieces* depending on the cable length and possible interference due to external influence.

*Divided over 4 zones and 3 strings of 50 pieces per zone.

5. Use temperature sensor

Use the separate temperature sensor in the network only after you installed all of the fixtures and everything works properly.