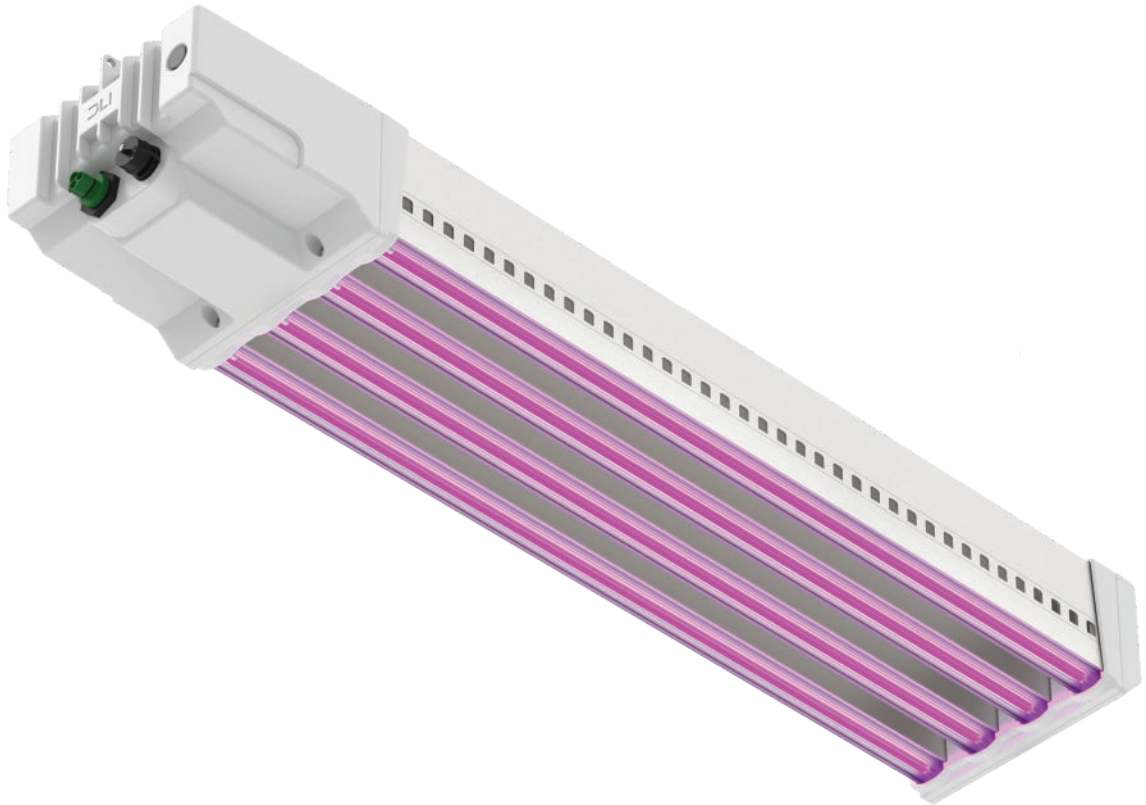




**Dutch Lighting**<sup>™</sup>  
Innovations



# DLI ZENITH-Series LED TopLight

Redefine  
Grow Light

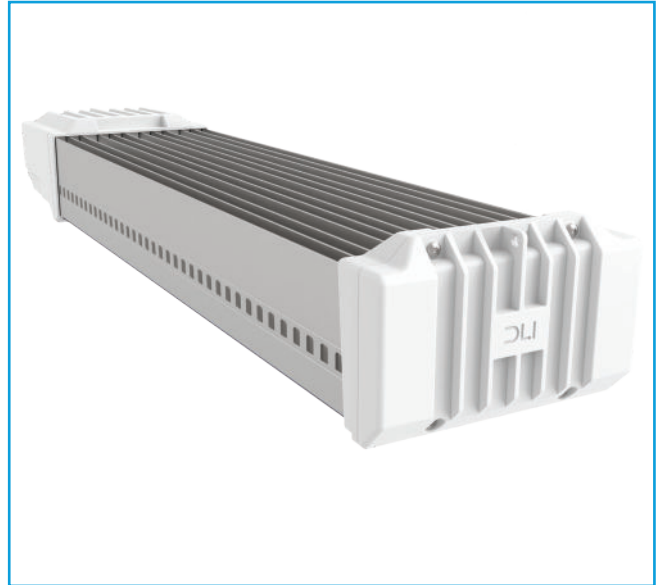
Designed and made in The Netherlands

[WWW.DLI.NL](http://WWW.DLI.NL)



# Dutch Lighting Innovations. We Redefine Grow Light.

We are forward-thinking professionals; we combine our passion for the market with decades of experience and knowledge to provide our customers with the best possible solutions in each case.



### Innovation through performance & design

We have developed a new range of horticultural lighting products that perfectly follow modern energy efficiency and durability requirements. By combining proven technology with innovations, we provide the best solutions. Making sure the best results are reached.

### Innovation and tailor-made solutions

Innovation is the cornerstone of Dutch Lighting Innovations (DLI). We always listen closely to our customers to understand their needs and provide tailor-made solutions where required. Because of this, we can always create a fixture that exceeds the requirements of our customers.

### Made in the Netherlands

Dutch and proud of it. We're from a small country that brought the world many innovations to the horticultural sector. Our grow lights are manufactured in the Netherlands according to our high DLI standards. We do not compromise on quality. Never.

Your new grow  
lighting system  
**Time to Advance!**

## OUR PROMISE TO YOU

Entrepreneurial  
mindset

Setting the  
new standard

Innovative design  
and products

Reliable and  
high quality

The best of  
the best

# DLI ZENITH-Series LED TopLight

At Dutch Lighting Innovations, we listened carefully to the wishes and requirements of growers. This has resulted in the most recent innovation. Under the name "ZENITH" we present the newest DLI LED fixture.

## Smaller, lower and lighter

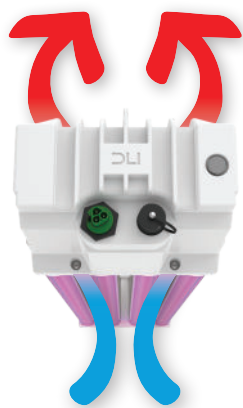
Because sunlight is the best grow light, the reduces light interception through its design. Due to its unique shape, it fits perfectly under the climate screens, which results in a synergy that reduces the total light interception in the greenhouse. Each percent of extra sunlight in the greenhouse results in lower power consumption and extra yield. The low weight of the fixture makes installation easier and reduces the total load on the truss.

## Wireless dimming and control

Dimmability of ZENITH fixtures is achieved through the wireless DLI multi-group dongle. The fixtures are easily connected to the multi-zone mesh network and divided into groups according to the growers' wishes. The wireless system effortlessly connects to the greenhouse computer. There are no costly modifications to cabling or panels required.

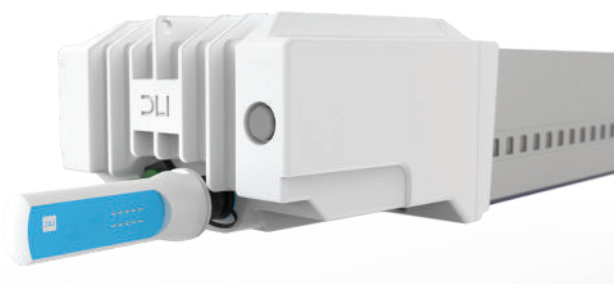
## Cooler and more efficient

The successful APEX fixture, the fixture that has served as the basis for ZENITH; due to the use of the venturi effect, ZENITH is known as the best-cooled fixture in the market. During ZENITH'S development, much effort has been put into taking the cooling to the next level. By modifying the cooling fins and increasing the surface area, the venturi effect is even more substantial, resulting in an optimized heat transfer capable of removing up to 30% more heat. The extra cooling power results in a lower LED temperature which translates into a higher efficacy and longer lifespan of the fixture.



## Controllable far-red

The ZENITH is available in multiple spectra. Suitable for every crop and cultivation type. Spectra with far-red are also available. The ZENITH is available with a fixed percentage of far-red in the spectrum where far-red and PAR-light are switched on together. It's also possible to control the far-red independently from the PAR light through dual-channel control, for instance, in crops that require a short period of far-red at the end of the day, after the regular lighting period with PAR-light.



# DLI ZENITH-Series LED TopLight

| Specifications DLI ZENITH-Series LED Toplight |              |                    |  |
|---|--------------|--------------------|--|
| Output ( $\mu\text{mol/s}$ )                  | up to 4.250  | IP Rating          | IP65   |
| Spectrum                                      | On request   | Product Dimensions | 38.6 x 8.3 x 5.1 inch<br>98 x 21 x 13 cm<br>33.1 x 8.3 x 5.1 inch<br>84 x 21 x 13 cm |
| Power   | up to 1.170W | Product Weight     | 26.5 lb / 12 kg<br>24.3 lb / 11 kg   |
| Voltage Range                                 | 208V - 400V  | Certifications     | CE, CSA,   |
| Efficiency ( $\mu\text{mol/J}$ )              | up to 3.8    | Country of origin  | The Netherlands  |
| Dimming                                       | 20%-100%     | Warranty           | 5 Years  |

*\*All values are measured according to industry standards, at 25°C ambient temperature, in the range of 400-800nm.*



Designed and made in The Netherlands

Lakenblekerstraat 41  
1431 GE Aalsmeer  
The Netherlands

WWW.DLI.NL  
INFO@DLI.NL  
+31 297 - 760 500